



67 Main Street, Kirkby Lonsdale
£250,000



67 Main Street

Kirkby Lonsdale, Carnforth

Nestled in the heart of the picturesque market town of Kirkby Lonsdale, this charming one-bedroom mid-terraced house exudes character and charm. Beyond its inviting stone facade lies a delightful home that seamlessly blends period features with modern comforts. The property's fantastic location affords easy access to the town amenities, including shops, restaurants, and leisure facilities, enhancing convenience and quality of life for its occupants.

The first floor welcomes you with a charming sitting room bathed in natural light, boasting elegant wood panelling and a cozy electric fireplace, creating a perfect space for relaxation or entertaining. Proceeding through, you will find the modern kitchen, complete with integrated appliances, offering a contemporary touch to this character-filled abode. Ascending to the upper levels, you will discover two stylish shower rooms, ensuring convenience and privacy for residents and guests alike. The property's layout includes a double bedroom with an additional mezzanine space, providing versatility and ample room for living and storage needs. The landing area further offers a dining room and study, catering to various lifestyle preferences and requirements. Practicality meets comfort with gas central heating throughout and secondary glazing on the upper levels, ensuring a warm and cosy ambience all year round.

Offered with no upper chain, this charming mid-terraced house presents a unique opportunity to own a piece of history in a sought-after location, blending traditional character with contemporary living seamlessly. Whether you are looking for a tranquil retreat or a vibrant town lifestyle, this property caters to a diverse range of preferences and needs, making it a truly compelling option for those seeking a special place to call home.

Council Tax band: B

Tenure: Leasehold

HALLWAY

15' 3" x 6' 9" (4.66m x 2.06m)

DINING ROOM

16' 2" x 7' 1" (4.92m x 2.15m)

SITTING ROOM

13' 6" x 12' 7" (4.11m x 3.84m)

KITCHEN

12' 1" x 8' 4" (3.69m x 2.54m)

BATHROOM

5' 8" x 2' 10" (1.72m x 0.87m)

LANDING

15' 0" x 7' 0" (4.58m x 2.13m)

MEZZANINE

9' 6" x 6' 5" (2.89m x 1.95m)

BEDROOM

12' 6" x 12' 7" (3.82m x 3.83m)

BATHROOM

12' 1" x 3' 0" (3.68m x 0.92m)

EPC RATING E

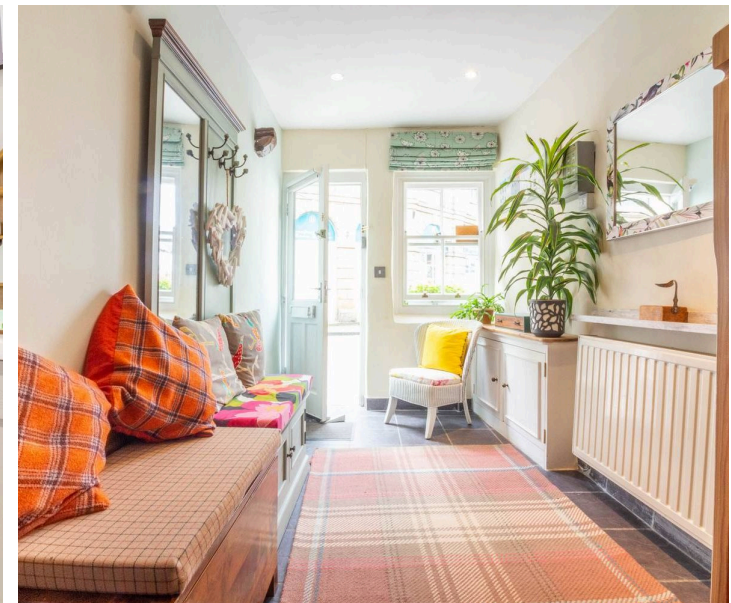
COUNCIL TAX BAND B

SERVICES

Mains gas, mains electric, mains water, mains drainage

IDENTIFICATION CHECKS

Should a purchaser(s) have an offer accepted on a property marketed by THW Estate Agents they will need to undertake an identification check. This is done to meet our obligation under Anti Money Laundering Regulations (AML) and is a legal requirement. We use a specialist third party service to verify your identity. The cost of these checks is £43.20 inc. VAT per buyer, which is paid in advance, when an offer is agreed and prior to a sales memorandum being issued. This charge is non-refundable.





HALLWAY

15' 3" x 6' 9" (4.66m x 2.06m)

DINING ROOM

16' 2" x 7' 1" (4.92m x 2.15m)

SITTING ROOM

13' 6" x 12' 7" (4.11m x 3.84m)

KITCHEN

12' 1" x 8' 4" (3.69m x 2.54m)

BATHROOM

5' 8" x 2' 10" (1.72m x 0.87m)

LANDING

15' 0" x 7' 0" (4.58m x 2.13m)

MEZZANINE

9' 6" x 6' 5" (2.89m x 1.95m)

BEDROOM

12' 6" x 12' 7" (3.82m x 3.83m)

BATHROOM

12' 1" x 3' 0" (3.68m x 0.92m)

EPC RATING E

COUNCIL TAX BAND B

SERVICES

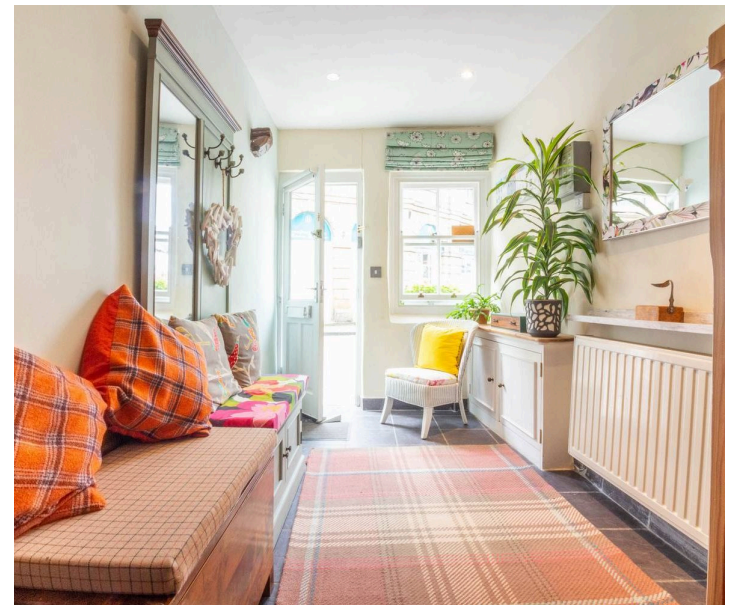
Mains gas, mains electric, mains water, mains drainage

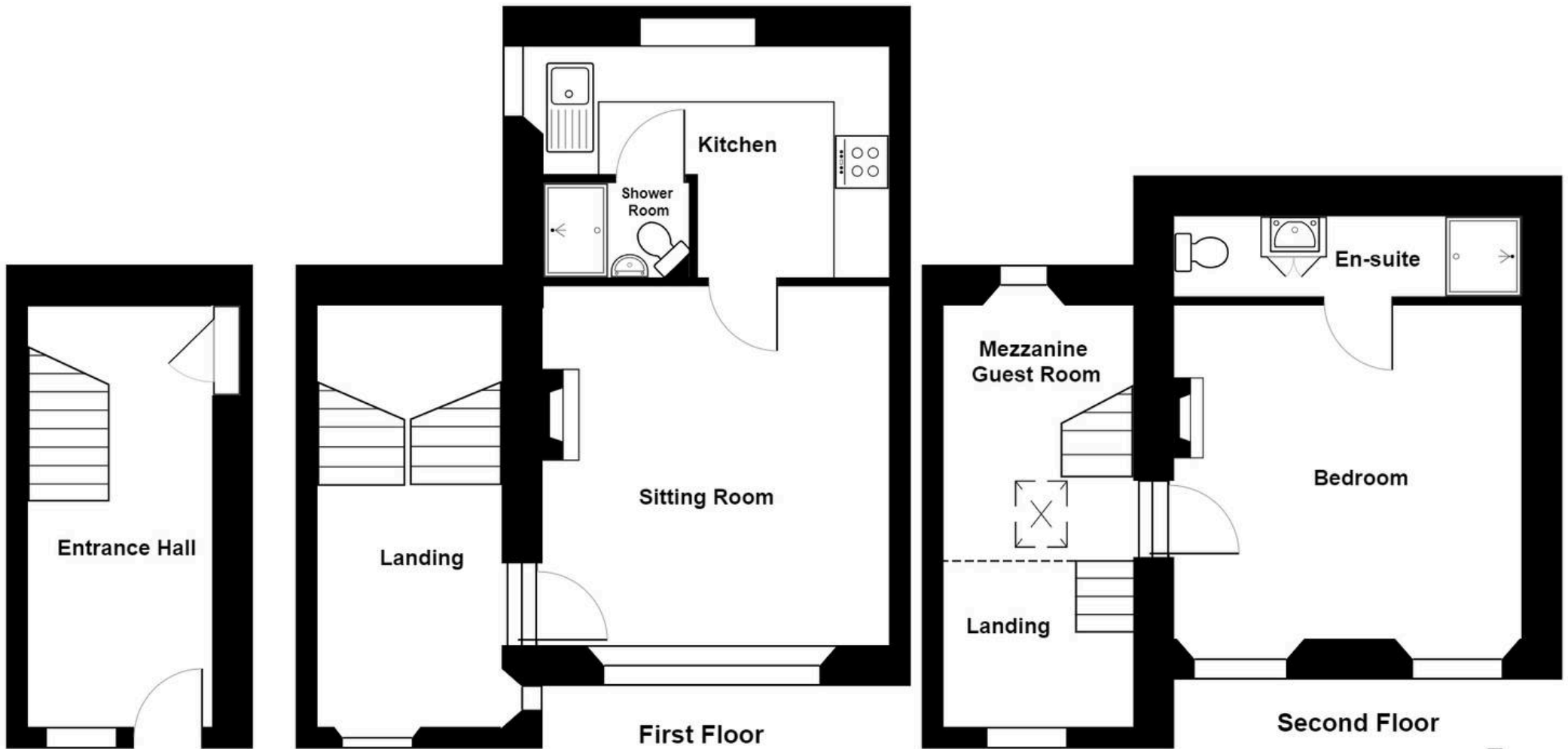
IDENTIFICATION CHECKS

Should a purchaser(s) have an offer accepted on a property marketed by THW Estate Agents they will need to undertake an identification check. This is done to meet our obligation under Anti Money Laundering Regulations (AML) and is a legal requirement. We use a specialist third party service to verify your identity. The cost of these checks is £43.20 inc. VAT per buyer, which is paid in advance, when an offer is agreed and prior to a sales memorandum being issued. This charge is non-refundable.









Ground Floor

First Floor

Second Floor

67 Main Street, Kirkby Lonsdale

Total Area: 74.4 m² ... 801 ft²

For illustrative purposes only - not to scale. The position and size of features are approximate only.
© North West Inspector.





THW Estate Agents

29 Main Street, Kirkby Lonsdale - LA6 2AH

015242 71999 • kirkby@thwestateagents.co.uk • www.thwestateagents.co.uk

Please note that descriptions, photographs and plans are for guidance only. Services and appliances have not been tested, measurements are approximate and alterations may not have necessary consents. Contact us for property availability and important details before travelling or viewing properties. THW Estate Agents Ltd is a separate legal entity to the solicitor firm of THW Legal Ltd which has different ownership and clients of THW Estate Agents Ltd do not have the same protection as those of THW Legal Ltd.