



16 Meathop Grange, Meathop
£220,000



16 Meathop Grange

Meathop

A delightful apartment forming part of the fabulous Meathop Grange development set within mature woodland and gardens. Meathop Grange is located in the hamlet of Meathop, within walking distance of Woodlands bar and restaurant and is just a short drive from the amenities on offer in the popular coastal town of Grange-over Sands. The development is within easy reach of the market town of Kendal, both the Lake District and Yorkshire Dales National Parks and the M6.

Nestled in a picturesque setting in the tranquil Grange-over-Sands area, this charming ground floor apartment offers a delightful retreat for those seeking peaceful living. The light and airy sitting dining room welcome you with a sense of warmth and cosiness, perfect for relaxing or entertaining guests. The modern kitchen is a culinary haven, boasting space for cooking and ample storage space for all your cooking needs. The property also has allocated parking.

This 2-bedroom flat features two generously sized double bedrooms, providing plenty of space for rest and relaxation. The three-piece bathroom comprises a W.C., wash hand basin and bath. Outside, the property is surrounded by beautiful communal grounds with well-kept lawns and enchanting woodlands, creating a serene outdoor oasis for residents to enjoy. With stunning local walks just moments away and allocated parking for convenience, this property presents a unique opportunity for a tranquil lifestyle in a sought-after locale.

- Charming ground floor apartment
- Located in a beautiful quiet area
- Light and airy sitting dining room
- Beautiful communal grounds
- Modern kitchen
- Stunning local walks
- Two double bedrooms with plenty of space
- Easy access to Grange-over-Sands
- Three piece bathroom
- Allocated parking

EPC RATING D

SERVICES

Mains electric, mains water, mains drainage

COUNCIL TAX: BAND C

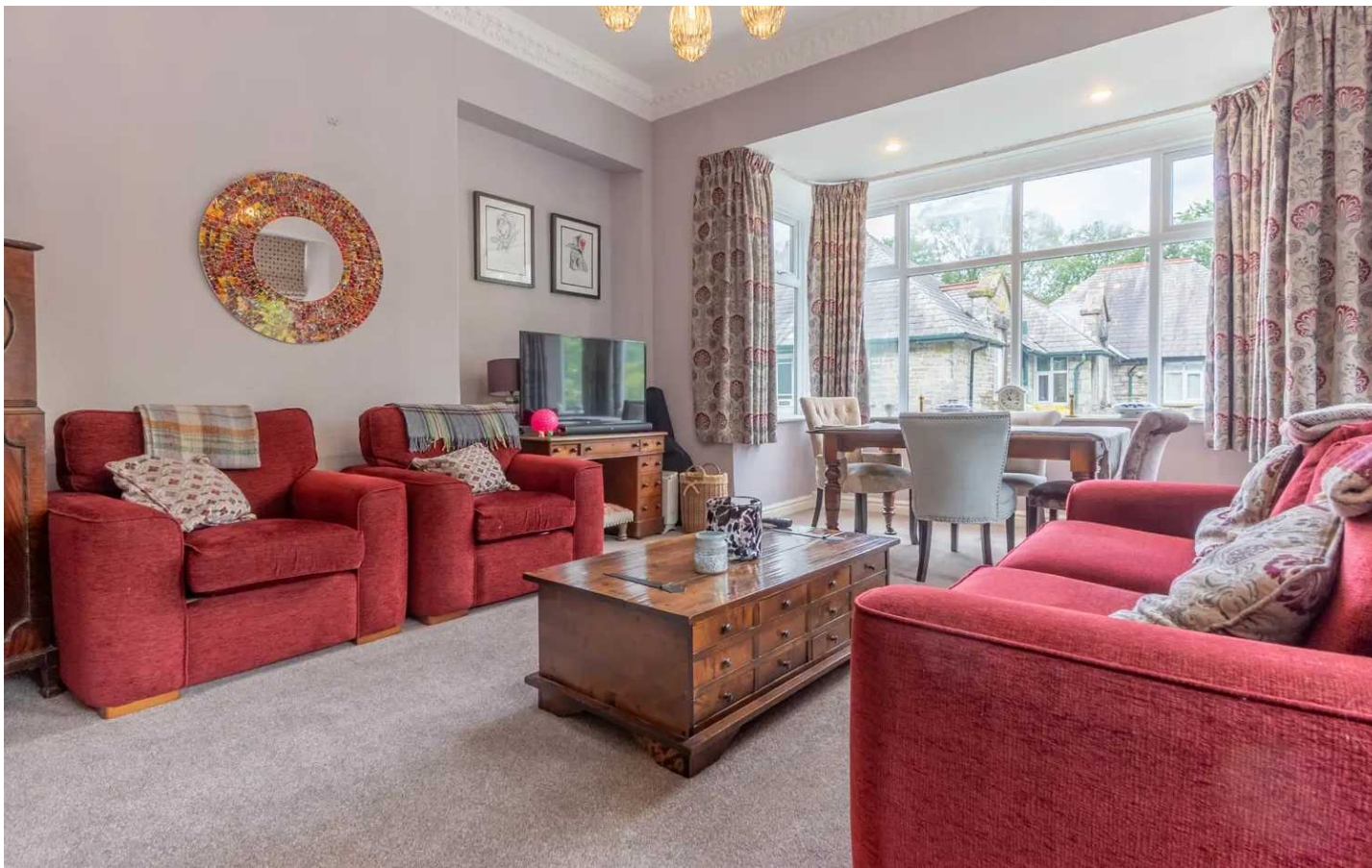
TENURE: LEASEHOLD

DIRECTIONS

Leave Grange-over Sands via Lindale Road. Pass the railway station and turn right in to Meathop Road. Proceed to Meathop and turn right at the gateposts marked Meathop Grange then turn right in to the development.

WHAT3WORDS: streetcar.locator.relations





GROUND FLOOR

ENTRANCE HALL

24' 1" x 8' 3" (7.34m x 2.51m)

SITTING DINING ROOM

20' 2" x 17' 3" (6.15m x 5.27m)

KITCHEN

11' 1" x 8' 6" (3.37m x 2.60m)

BEDROOM

14' 0" x 11' 10" (4.26m x 3.60m)

BEDROOM

11' 2" x 9' 1" (3.41m x 2.78m)

BATHROOM

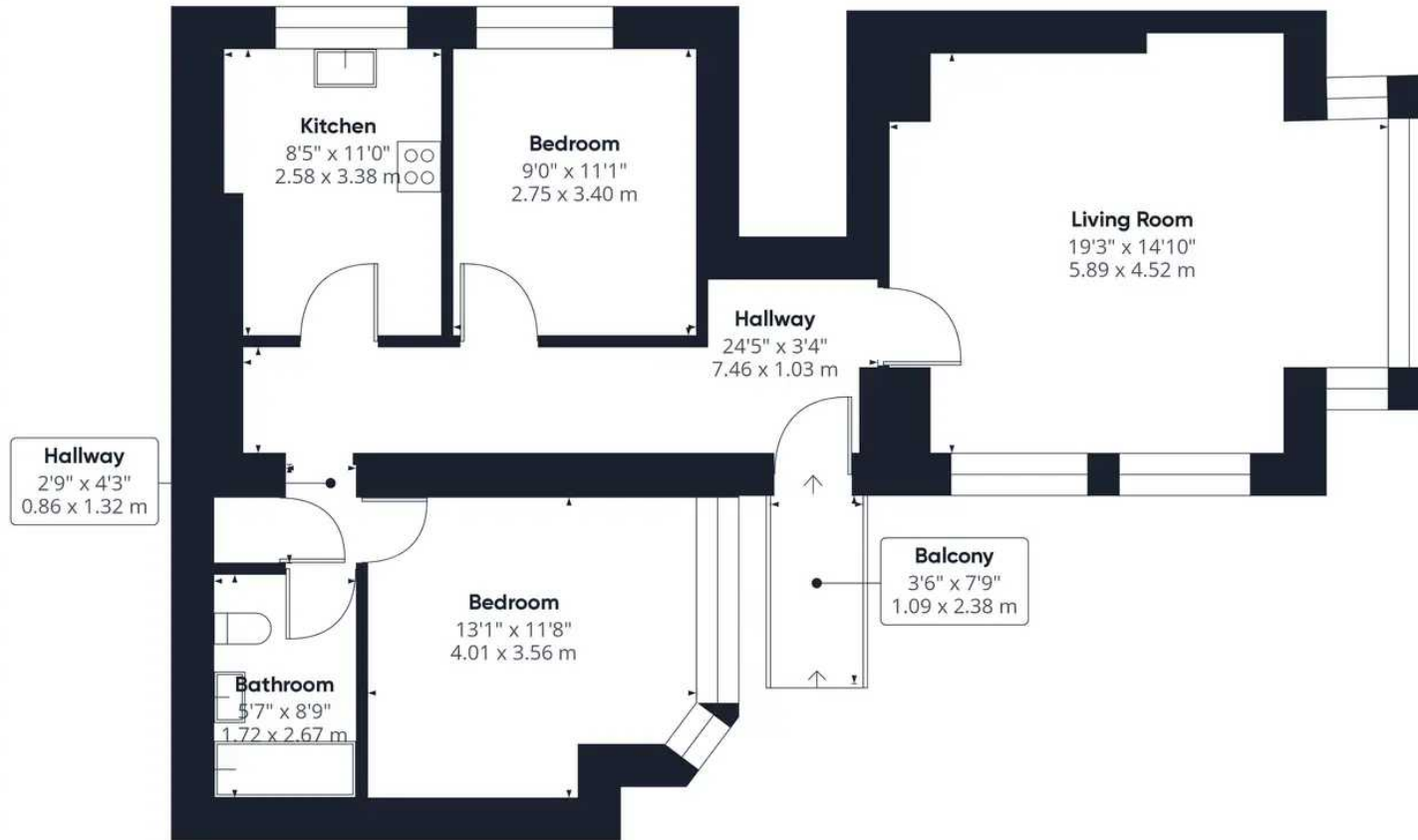
8' 10" x 5' 7" (2.68m x 1.70m)











Approximate total area⁽¹⁾

811.2 ft²
75.36 m²

(1) Excluding balconies and terraces

While every attempt has been made to ensure accuracy, all measurements are approximate, not to scale. This floor plan is for illustrative purposes only.

GIRAFFE360

THW Estate Agents

Palace Buildings Main Street, Grange-Over-Sands - LA11 6AB

015395 33335 • grange@thwestateagents.co.uk • www.thwestateagents.co.uk

Please note that descriptions, photographs and plans are for guidance only. Services and appliances have not been tested, measurements are approximate and alterations may not have necessary consents. Contact us for property availability and important details before travelling or viewing properties. THW Estate Agents Ltd is a separate legal entity to the solicitor firm of THW Legal Ltd which has different ownership and clients of THW Estate Agents Ltd do not have the same protection as those of THW Legal Ltd.