



1 Crow Wood, Brigsteer
£500,000



1 Crow Wood

Brigsteer, Kendal

Council Tax band: E

Tenure: Freehold

GROUND FLOOR

SITTING ROOM

24' 1" x 10' 11" (7.33m x 3.33m)

Both max. Double glazed sliding door, two double glazed windows, electric fire to feature fireplace.

KITCHEN

12' 4" x 9' 1" (3.75m x 2.78m)

Both max. Double glazed window, three single glazed doors, storage heater, base and wall units, stainless steel sink, built in oven, integrated fridge, tiled splashback.

DINING ROOM

12' 2" x 9' 3" (3.72m x 2.82m)

Both max. Two single glazed doors, double glazed windows, storage heater, built in cupboard housing hot water boiler.

BEDROOM

15' 1" x 11' 5" (4.61m x 3.49m)

Both max. Two double glazed windows, storage heater, fitted wardrobe.

BEDROOM

11' 11" x 9' 11" (3.64m x 3.02m)

Both max. Double glazed window, storage heater.

BATHROOM

9' 5" x 5' 4" (2.86m x 1.63m)

Both max. Double glazed window, storage heater, three piece suite comprises W.C. wash hand basin and bath, fully tiled walls.

UTILITY ROOM

15' 4" x 5' 1" (4.68m x 1.55m)

Both max. Double glazed door, double glazed windows, storage heater, plumbing for washer dryer, space for fridge freezer, tiled flooring.

HALLWAY

9' 3" x 5' 10" (2.82m x 1.79m)

Both max. Single glazed door, storage heater, loft access.

PORCH

4' 1" x 2' 11" (1.25m x 0.88m)

Both max. Single glazed door.

LOWER GROUND FLOOR





GROUND FLOOR

SITTING ROOM

24' 1" x 10' 11" (7.33m x 3.33m)

Both max. Double glazed sliding door, two double glazed windows, electric fire to feature fireplace.

KITCHEN

12' 4" x 9' 1" (3.75m x 2.78m)

Both max. Double glazed window, three single glazed doors, storage heater, base and wall units, stainless steel sink, built in oven, integrated fridge, tiled splashback.

DINING ROOM

12' 2" x 9' 3" (3.72m x 2.82m)

Both max. Two single glazed doors, double glazed windows, storage heater, built in cupboard housing hot water boiler.

BEDROOM

15' 1" x 11' 5" (4.61m x 3.49m)

Both max. Two double glazed windows, storage heater, fitted wardrobe.

BEDROOM

11' 11" x 9' 11" (3.64m x 3.02m)

Both max. Double glazed window, storage heater.

BATHROOM

9' 5" x 5' 4" (2.86m x 1.63m)

Both max. Double glazed window, storage heater, three piece suite comprises W.C. wash hand basin and bath, fully tiled walls.

UTILITY ROOM

15' 4" x 5' 1" (4.68m x 1.55m)

Both max. Double glazed door, double glazed windows, storage heater, plumbing for washer dryer, space for fridge freezer, tiled flooring.

HALLWAY

9' 3" x 5' 10" (2.82m x 1.79m)

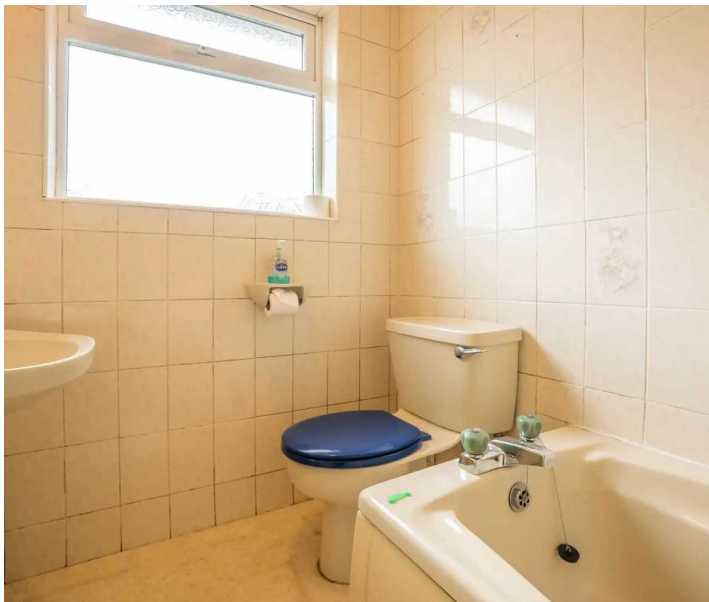
Both max. Single glazed door, storage heater, loft access.

PORCH

4' 1" x 2' 11" (1.25m x 0.88m)

Both max. Single glazed door.

LOWER GROUND FLOOR





GARDEN

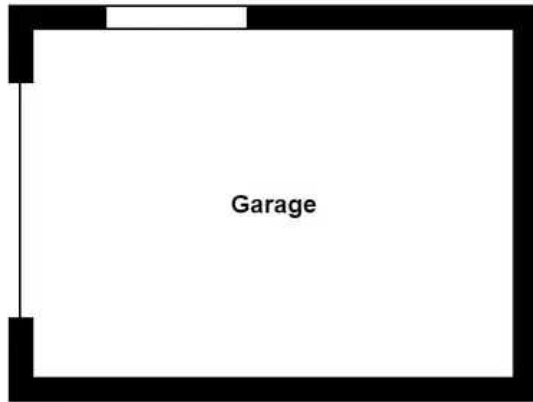
A delightful generous sized garden with well kept lawns, established trees, hedges, rockery features and three sheds. To the rear of the garden is a summer house.

GARAGE

Single Garage

17' 81" x 12' 04" (5.43m x 3.67m) Up and over door.





Lower Ground Floor



Ground Floor

1 Crow Wood, Brigsteer
Total Area: 108.3 m² ... 1166 ft²

For illustrative purposes only - not to scale. The position and size of features are approximate only.
© North West Inspector.



THW Estate Agents

112 Stricklandgate, Kendal - LA9 4PU

01539 815700 • kendal@thwestateagents.co.uk • www.thwestateagents.co.uk



Your Local Estate Agents **Thomson Hayton Winkley**